

## SHADE - SAIL MEASURING PROCEDURE

This method of obtaining ShadeSail measurements is to be followed whenever possible.

By following the attached procedure you will greatly assist in the reduction of shade sail errors caused by confusion between the person measuring the Shadesail and the persons designing and manufacturing the Shadesail.

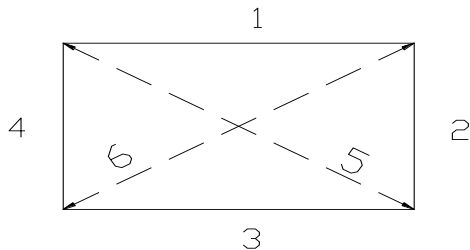
**METHOD:** All measurements should be taken between the fixing points (ie eye to eye on posts, wall brackets etc etc)

**UNITS:** All measurements on drawings to be in inches **OR** millimetres.

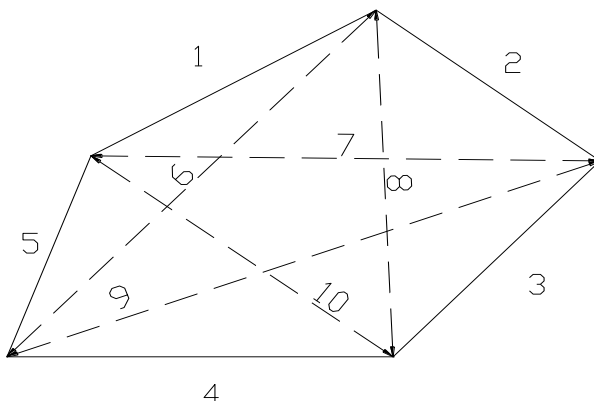
**ACCURACY:** All measurements to be to the nearest 1/2 inch **OR** 10mm.  
All outside measurements are required and please supply as many diagonal measurements as possible. This will facilitate the manufacture of a correct fitting Shadesail.

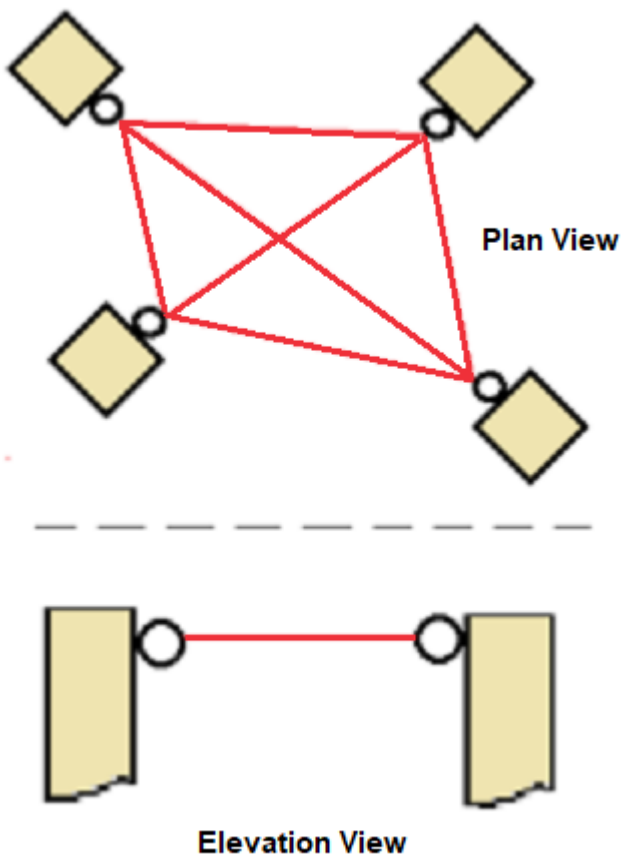
**Mark:** Please mark a corner on the drawing as this will assist you with orientation of the unit at installation.

**IE:**  
A square or rectangular Shade sail requires six measurements.



And a five sided ShadeSail requires 10 measurements.





Measurements are to be taken from fixing point to fixing point as shown.

These **MUST** be *Actual* dimensions from your mounting point to mounting point.

**We will make necessary reductions for fixings and stretch.**